



*brisbane international 2014
corporate entertainment*





brisbane international – the ultimate experience

At the conclusion of Brisbane International 2013 the names Serena Williams and Andy Murray were etched onto the Evonne Goolagong-Cawley and Roy Emerson trophies. These two superstars of world tennis were also the reigning Olympic gold medallists and US Open Champions. If talent alone was the measuring stick, then the event had well and truly arrived in Queensland at Brisbane International number five.

Eight of the top 10 women and five of the top 20 men chose Brisbane to begin their assault on the Aussie summer of tennis – and it was a must see for the 88,135 fans who watched it all unfold at the Queensland Tennis Centre.

There is no better location to enjoy a sporting event in Brisbane. With world-class action on display inside Pat Rafter Arena and all the off court activities, more and more people are choosing Brisbane International. It's an event that appeals to the wider demographic, offering something a little different to the traditional forms of corporate entertainment – and a tournament that has been judged Queensland's best sporting event twice in five years! We encourage you to consider Brisbane International 2014, in your future plans, as we look forward to another very special event.



roger federer is coming to brisbane...



In 2014, the greatest tennis player of all time, Roger Federer is coming to Brisbane. Drawing sell out crowds, Roger Federer's style of play has gained the admiration of tennis fans around the world, but his greatest legacy may well prove to be the rewriting of the history books.

- Most Grand Slam® singles titles
- Most weeks at No.1
- Most Grand Slam® singles finals
- Most Grand Slam® wins

This will be the first time in history that Queenslanders will be able to see the great champion in action, so be amongst the first to secure your seats today.

We look forward to welcoming you to the Queensland Tennis Centre for Brisbane International 2014 for what promises to be another world-class sporting event ...an occasion simply not to be missed!

brisbane international corporate suites

Our luxury twelve (12) seat corporate suites deliver the ultimate Brisbane International hospitality experience. Treat your guests to the best in entertainment and enjoy the perfect environment for relaxed networking. The corporate suites are ideally located directly behind the baseline and elevated for the perfect view.

benefits include:

- ▶ private twelve (12) seat indoor air-conditioned suite, including boardroom style dining table and kitchenette
- ▶ premium outdoor balcony cushioned seating for all twelve (12) guests
- ▶ access to exclusive player visits (subject to availability)
- ▶ one (1) corporate car park per session
- ▶ complimentary programs provided in suites (one per person)
- ▶ access to the Brisbane International exclusive corporate bar
- ▶ company identification signage at the corporate entry and on your corporate suite door
- ▶ a selection of food and beverages available on request (additional cost)

choose an alternative that best suits your needs:

\$31,500	all 14 sessions
\$19,990	split session package (A or B) Seven nominated sessions (limited numbers apply)

package A		package B	
RND	SESSION	RND	SESSION
1	☀ Sunday 29	1	☀ Monday 30
1	🌙 Monday 30	1&2	🌙 Tuesday 31
1&2	☀ Tuesday 31	2	☀ Wednesday 1
2	🌙 Wednesday 1	QF	🌙 Thursday 2
QF	☀ Thursday 2	QF	☀ Friday 3
MS	☀ Saturday 4	WS	🌙 Friday 3
WF	🌙 Saturday 4	MF	☀ Sunday 5

☀ Day session 🌙 Night session



"2014 will be our fifth consecutive year that we have booked a Corporate Suite at Brisbane International. We secure it for the entire tournament and it's been a very popular facility for us. We have found it to be the perfect way to say thank you to our many valued clients and it's also a great way to kick off the start of the new year. Not only do we witness world-class tennis from the best seats in the house, we are provided with quality catering and service to match – and we just love it when a star player drops in to our suite for a quick visit. For us, the Brisbane International never fails to entertain or excite!"

Maxine Dwyer
Executive Assistant, SMS Management & Technology.

brisbane international corporate boxes

Enjoy all the centre court action from the popular eight (8) seat open air corporate boxes. Located court side in Pat Rafter Arena, these boxes offer fantastic viewing and provide you and your guests with a unique opportunity to get up close and personal with the best tennis players in the world.

benefits include:

- ▶ private eight (8) seat open air court side enclosure, with ice box and steward service
- ▶ complimentary programs (one per person)
- ▶ one (1) corporate car park per session
- ▶ external company signage on your corporate box
- ▶ access to the Brisbane International exclusive corporate bar
- ▶ a selection of food and beverages served to your corporate box (additional cost)
- ▶ alternative option to purchase food and beverages in the corporate dining room – available from Wednesday 1–Sunday 5 January (additional cost)

choose an alternative that best suits your needs:

\$15,690	all 14 sessions
\$9,500	split session package (A or B) Seven nominated sessions (limited numbers apply)

package A		package B	
RND	SESSION	RND	SESSION
1	☀ Sunday 29	1	☀ Monday 30
1	🌙 Monday 30	1&2	🌙 Tuesday 31
1&2	☀ Tuesday 31	2	☀ Wednesday 1
2	🌙 Wednesday 1	QF	🌙 Thursday 2
QF	☀ Thursday 2	QF	☀ Friday 3
MS	☀ Saturday 4	WS	🌙 Friday 3
WF	🌙 Saturday 4	MF	☀ Sunday 5

☀ Day session 🌙 Night session



"The eight seat corporate box is the ideal facility for us and it's great value too! We use it for business development, as well as rewarding our key stakeholders and all of our guests really enjoy the experience. The open air facility creates an atmosphere which is more relaxed and we are right next to the court – it is absolutely amazing being so close to the players. The only thing you have to watch for is champagne corks during sets".

Ginette Muller
Senior Managing Director, FTI Consulting.

brisbane international baseline club

The new Baseline Club offers the true tennis enthusiast the perfect package. Your premium cushioned reserved seat located right behind the baseline will ensure you enjoy your tennis up close in comfort and style. Feel the on-court pressure and intense rivalries as the action heats up between the world's best players. Your premium reserved seat in Pat Rafter Arena for all fourteen (14) sessions is transferable – allowing you to share with family and friends, send along a guest or just enjoy for yourself. The Baseline Club also includes complimentary programmes and access to the exclusive corporate bar and dining rooms.

benefits include:

- ▶ premium reserved cushioned seating for all fourteen (14) sessions inside Pat Rafter Arena
- ▶ priority access to corporate car park – subject to availability
- ▶ one (1) complimentary programme per seat / per session
- ▶ access to the Brisbane International exclusive corporate bar
- ▶ option to purchase food and beverages in the corporate dining room – available from Wednesday 1–Sunday 5 January (additional cost)

\$1580 per seat



"Our guests unanimously agreed the Baseline Club was the best way to see all the action at the Brisbane International in 2013. They loved being at the heart of the action, and experiencing the energy and excitement of the tournament. We are really looking forward to using our Baseline Club package again in 2014 and showcasing all the Brisbane International has to offer to our valued customers and clients."

Bernadette Norrie
Corporate Brand and Sponsorship, Suncorp.

brisbane international session select

Brisbane Session Select is the popular all inclusive and “fuss free” option. This flexible package includes a prime reserved seat in Pat Rafter Arena, as well as a three (3) course buffet meal and beverages, served pre-session in the corporate dining room. Complimentary programme and access to the exclusive corporate bar are also included. Available on a per session basis from Wednesday to Saturday or as a package only to the women’s and men’s finals on Saturday night and Sunday. The Session Select package is the “all in one” ticket enabling you to sit back, relax and enjoy your Brisbane International experience!

benefits include:

- ▶ prime reserved seat inside Pat Rafter Arena
- ▶ all inclusive three (3) course buffet meal and beverages served in the corporate dining room
- ▶ one (1) complimentary programme per seat / per session
- ▶ access to the Brisbane International exclusive corporate bar

choose an alternative that best suits your needs:

RND	SESSION	PRICE
2	☀ Wednesday 1	\$260
2	🌙 Wednesday 1	\$260
2 & QF	☀ Thursday 2	\$280
2 & QF	🌙 Thursday 2	\$280
QF	☀ Friday 3	\$280
SF	🌙 Friday 3	\$320
SF	☀ Saturday 4	\$320
WF	🌙 Saturday 4	\$680
MF	☀ Sunday 5	

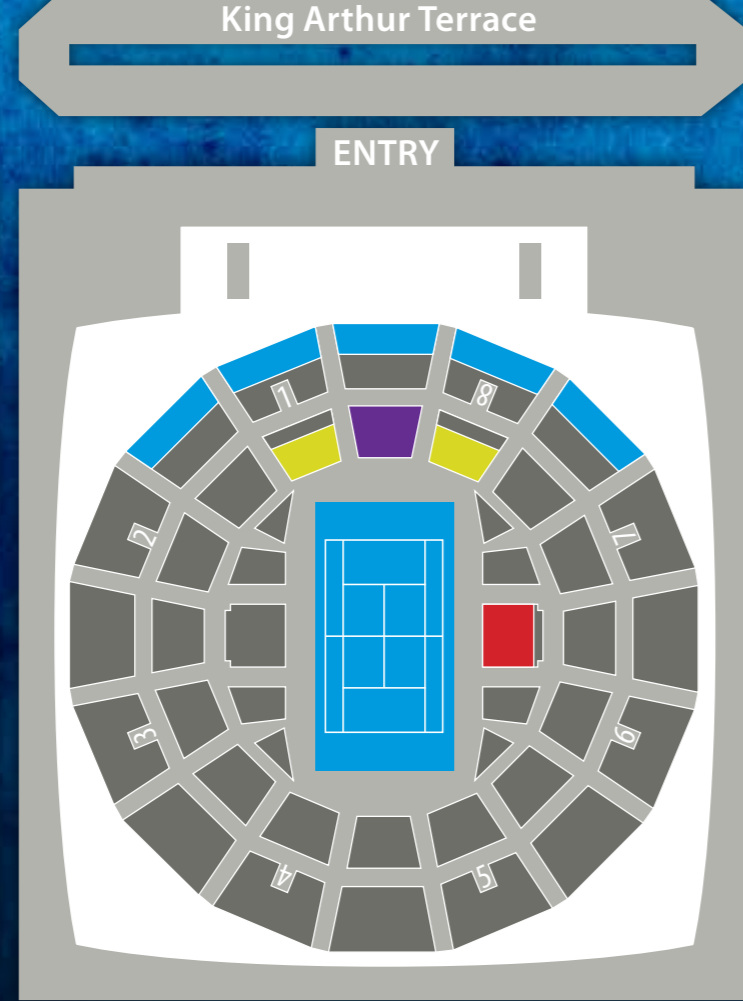
☀ Day session 🌙 Night session



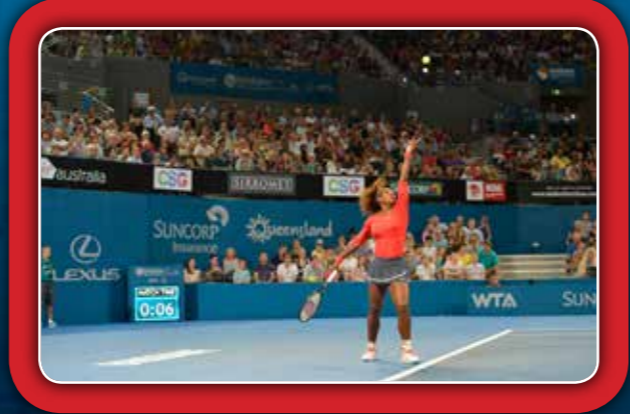
“We’ve been to four Brisbane Internationals now, and it just keeps getting bigger and better each year. The Session Select package is great and our clients are always impressed with the seating and catering arrangements. The seats are so close to the action, we’ve even caught a Petra Kvitova wrist band and have a signed towel as mementos. Whilst we get to see the men’s and women’s finals, we also enjoy taking the opportunity to walk around the outdoor courts to see all of our favourite stars during their warm up and practice sessions”.

Raylene Peacock
Secretary, Ability Excavations.

pat rafter arena corporate seating guide



- baseline club
- corporate suites
- corporate boxes
- session select



brisbane international 2014 reservation form and tax invoice*



package	price per seat/package (incl. gst)	no. of seats/packages	subtotal \$
corporate suite	\$31,500		
corporate suite package A	\$19,990		
corporate suite package B	\$19,990		
corporate box	\$15,690		
corporate box package A	\$9,500		
corporate box package B	\$9,500		
baseline club	\$1,580		
session select			
date	round	session	total
Wed 1 Jan	2 & QF	Day	\$260
	2 & QF	Night	\$260
Thu 2 Jan	QF	Day	\$280
	QF	Night	\$280
Fri 3 Jan	QF	Day	\$280
	WS	Night	\$320
Sat 4 Jan	MS	Day	\$320
	WF	Night	\$680
Sun 5 Jan	MF	Day	\$680
			total
			credit card admin fee of 3%[^]
			grand total (incl. gst)

Payment terms: A minimum 50% deposit is required to secure your booking. Please select one of the following options:
 I wish to pay a 50% deposit (only available for bookings made prior to Friday 30 August 2013) with the balance due by Friday 25 October 2013.
 I wish to pay in full.

contact details
 Company name:
 First contact name and title:
 Second contact name and title:
 Phone:
 Mobile:
 Email:
 Postal address:
 Fax:
 Industry:

Ticket delivery address* (only within Australia):

* Ticket packages delivered via courier require a street address for a representative to accept and sign for the package during business hours. Please refer to Corporate Terms and Conditions of Sale and Entry.
 Please tick this box if you do not wish to receive additional promotional material.
 Privacy statement: Tennis Australia requires the information requested on this reservation form to provide you with official Australian Open corporate package tickets and benefits and related purposes which can be reasonably expected including Tennis Australia/Australian Open promotional material. You will be able to access your personal information through Tennis Australia upon reasonable notice.

method of payment:
 Cheque (please see below for details) EFT (please see below for details) Amex Visa MasterCard MasterCard
[^] Please note that an admin fee of 3% will apply for all reservations paid by credit card.

Cardholder name:
 Card number:
Cheque: Please make payable to Tennis Australia Limited and send with a copy of the order form to Brisbane International Corporate Hospitality, PO Box 2366, Graceville QLD 4075.
EFT: ANZ, 388 Collins St, Melbourne Vic. 3000. **BSB:** 013 006. **Acc number:** 836070228. **Acc name:** Tennis Australia Limited. Please include your company name as well as a package reference when transferring payment and send remittance advise via email to brisbaneinternational@tennis.com.au.

agreement of conditions
 I, (print name):
 have read and agreed to the Corporate Terms and Conditions of Sale and Entry.
 Signature: _____ Date: _____

Reservations will only be accepted on completion of this signed form with payment.
 Please send to: Brisbane International, PO Box 2366, Graceville, Queensland, 4075
 Phone: (07) 3120 7933 Email: michael.murphy@tennis.com.au
 Fax: (07) 3120 7934 Website: brisbaneinternational.com.au



brisbane international premium seating and corporate hospitality terms and conditions of sale and entry 2014

Premium seating and hospitality Packages to Brisbane International (BI) 2014 are issued by Tennis Australia (TA), the organiser of the BI, subject to the following conditions:

1. general

- 1.1 Sales of Brisbane Session Seater or Baseline Club premium seating packages (**Premium Seat Packages**) and corporate hospitality packages (**Hospitality Packages**) are subject to availability. The submission of this order form (manual or online) does not guarantee purchase of a specific Premium Seat Package or Hospitality Package. TA, acting in good faith, reserves the right in its absolute discretion to determine the final allocation of seats.
- 1.2 Any disputes relating to these terms and conditions must be resolved in accordance with the laws of the State of Victoria, Australia and the parties submit to the jurisdiction of the courts of that state.
- 1.3 In addition to these terms and conditions, a purchaser of a Premium Seat Package or Hospitality Package and their guests (**Hospitality Guests**) are bound by any terms and conditions contained in or published on their tickets as well as the BI Conditions of Sale and Entry as published at brishbaninternational.com.au exhibited throughout Queensland Tennis Centre (QTC) and provided by TA on request, as amended by TA from time to time.
- 1.4 TA reserves the right to vary these terms and conditions at any time for operational, security or safety reasons by providing notice on the BI website at brishbaninternational.com.au.

2. purchase of hospitality packages

- 2.1 The purchaser and their hospitality guests have exclusive access and use of the corporate suite/box for the duration of a certain session of the BI. The purchaser and their hospitality guests shall only be entitled to use the corporate suite or box if they are the bearer of a appropriate tickets for admission to the suite or box. All tickets provided to the purchaser are for the sole and exclusive use of the purchaser and their hospitality guests.
- 2.2 The suite/box is furnished and equipped with fixtures and furnishings and no additions, changes, alterations or other improvements shall be made to any corporate suite or box without the prior written consent of TA.
- 2.3 The purchaser agrees that it will not permit its Hospitality Guests to:
 - bring food or beverages into a corporate suite or corporate box; or
 - consume food and beverage provided inside the corporate suite or box outside the corporate suite or box.
- 2.4 If requested by the Purchaser, TA shall make available to the Purchaser and their Hospitality Guests catering via the official corporate caterer at the BI (**Caterer**). The cost of such catering is to be borne by the Purchaser and their Hospitality Guests.
- 2.5 TA, Tennis Queensland (TQ), QTC, and their officers, agents, employees and contractors (including the Caterer) shall be entitled to access the corporate suite/box as reasonably necessary.

3. dress code

- TA encourages smart casual attire for all Hospitality Guests. Eg. collared shirt and tailored pants or shorts for males. No rubber thongs or singlets.

4. code of conduct

- All Hospitality guests must comply with the following:
 - wear tickets/passes correctly at all times (around the neck with packages; company name, session etc. facing out);
 - Ensure that children over the age of three have their own ticket (ie. Hospitality guests may not bring children over three to the BI without a ticket for that child);
 - Ensure that children under the age of 18 are accompanied by an adult in all premium reserved seating areas (including bars and dining rooms). TA reserves the right to exclude children under the age of 18 years from licensed areas.
 - Refrain from leaving seats during a point; between points or at the end of a game. Please wait for a change of ends.
 - Refrain from carrying on any conversation with others while points are being played.
 - Refrain from making loud comments, including questioning the abilities of any player, umpire or lineperson.
 - Refrain from using of foul language.
 - Ensure that all mobile phones and BlackBerries are on silent or turned off during matches.
 - Be cognisant of other hospitality guests seated near them and not provoke inacceptable behaviour.
- **Please note:** TA, TQ and QTC security have the discretion to remove anyone displaying unacceptable conduct/behaviour from the relevant area.

5. ticket on-selling

- 5.1 The sale of a Premium Seat Package or Hospitality Package creates a contract between TA and the Purchaser who gives the purchaser a transferable but conditional license for admission to QTC for a certain session of the BI.
- 5.2 The license granted to the Purchaser will automatically terminate if the Purchaser does any of the following without the express written consent of TA:
 - resells part or all of the Premium Seat Package or Hospitality Package;
 - sells the Premium Seat Package or Hospitality Package at a premium or through a broker or agent;
 - advertises or offers the Premium Seat Package or Hospitality Package for resale on the internet or in any other medium; or
 - Hospitality Packages for advertising, promotion or other commercial purposes (including competitions or trade promotions) or to enhance the demand for other goods or services.
- 5.3 If a Premium Seat Package or Hospitality Package is sold, advertised or otherwise used in breach of these conditions, the Purchaser's license terminates and TA may deny the bearer of the relevant Premium Seat Package or Hospitality Package admission to the BI or take other action, including refusing to sell Premium Seat Packages or Hospitality Packages to the Purchaser for future BI tournaments.
- 5.4 For any queries in relation to this clause please contact TA's BI Hospitality department by email at brishbaninternational@tennis.com.au.

6. assignment

- 6.1 A Session Select Premium Seat Package cannot be assigned.
- 6.2 A Baseline Club Premium seat package or Hospitality Package can only be assigned:
 - with the prior written consent of TA (which can be withheld in TA's absolute discretion);
 - to a single company or individual in its entirety (seating packages cannot be broken up and sold on an individual basis);
 - to a company or individual in its entirety (seating packages cannot be broken up and sold on an individual basis);
 - where there is a written commitment from the assignee, including its agreement to be bound by these terms and conditions.
- 6.3 In the event of any assignment, the purchaser of the Baseline Club Premium Seat Package or Hospitality Package will remain responsible for the assignee of the Baseline Club Premium Seat Package or Hospitality Package and the individual holder(s) of the allocated ticket(s) and will indemnify, defend and hold harmless TA in relation to the sale and use of the Baseline Club Premium Seat Package or Hospitality Package.
- 6.4 Any requests by the purchaser to assign a Baseline Club Premium Seat Package or Hospitality Package must be made in writing and directed to TA. If a request is granted, TA will obtain any necessary information from the assignee and will arrange for any signage and catering to be printed in the assignee's name where practicable (as determined by TA).

7. payments

- 7.1 All prices are in AUD\$ dollars and payments must be made in AUD\$ dollars.
- 7.2 All prices are inclusive of GST. TA reserves the right to adjust prices due to any increase or decrease in GST.
- 7.3 The reservation form becomes an official tax invoice for GST purposes when payment is confirmed by TA. An official tax invoice will be generated by TA for GST purposes when payment is confirmed by TA if a booking form has not been completed.
- 7.4 If paying by credit card, TA advises, and the purchaser acknowledges, that a credit card fee will apply in respect of all credit card purchases where any portion of the total fee is paid by credit card. The credit card administration fee or purchase will be 3%, these fees will be processed at the time of booking. Payment by credit card is processed at the time of seat allocation and confirmation.
- 7.5 Where any payment amount for a Premium Seat Package or Hospitality Package exceeds the cardholder's daily limit, it is the responsibility of the card holder to contact their financial institution to gain pre-approval for the transaction prior to payment being made.
- 7.6 If paying via EFT, payment must be made within 14 days of receipt of booking form by TA. Please send remittance advice via e-mail to brishbaninternational@tennis.com.au. EFT details are:
 - Account Name - Tennis Australia Limited
 - Account ID# - 35607028
 - BIS - 013006
 - ANZ
 - 388 Collins St
 - Melbourne 3000
- 7.7 If paying by cheque payment must be made within 14 days of receipt of booking form by TA. Please make payable to Tennis Australia Limited. All cheques are to be sent with a copy of order form to Brisbane International Corporate Hospitality, PO Box 2506, Gateville QLD 4075.
- 7.8 All payments received after 1 December 2013 must be made by credit card. Personal or company cheques will not be accepted after this time.

8. tickets

- 8.1 Tickets for a Premium Seat Package or Hospitality Package will only be issued upon receipt of full payment.
- 8.2 All tickets will show company or individual identification. In the case of Corporate Suites and boxes the company's identification will also appear.
- 8.3 All tickets will be delivered by registered post. The Purchaser may elect to arrange alternative options to registered post at their own expense.
- 8.4 Tickets will be delivered to a nominal Brisbane address for all international clients.
- 8.5 Tickets ordered prior to Friday 25 October 2013 will be delivered to the nominated delivery address in November 2013.

9. signage, advertising and promotions

- 9.1 Any company identification, signage in a corporate suite or corporate box must be the company's business or trading name or in the case of an individual, the first and/or surname only. The client will be required to provide their company logo to TA's appointed contractor for signage by 25 October 2013. Please note signage text and font is at the discretion of TA and signage can only be provided if there is no conflict with existing event, TQ or TA sponsors (as determined by TA in its absolute discretion).
- 9.2 No advertising or promotion by a purchaser or their Hospitality Guests will be permitted within the QTC site or surrounding precinct without the prior written consent of the Tournament Director.
- 9.3 No product sampling will be permitted within the QTC site or surrounding precinct.

10. indemnity and liability

- 10.1 Purchasers of Premium Seat Package or Hospitality Packages are responsible for the acts and omissions of their employees, officers, invitees and guests while at QTC and the Purchaser agrees to release and indemnify, defend and hold harmless TA, TQ and their respective officers, directors, employees, representatives and agents from and against any and all losses, liabilities, expenses, claims, demands, suits and damages whatsoever and howsoever arising (including legal fees on an indemnity basis or, if deemed appropriate, a solicitor / client basis) resulting from or in connection with the acts of omissions of the Purchaser's employees, officers, invitees and guests to the purchaser's breach of these terms and conditions.
- 10.2 To the maximum extent permitted by law, the Purchaser agrees that TA, TQ and their respective officers, directors, employees, representatives and agents are released and discharged of and from any and all claims, demands, suits, damages, losses, liabilities and injuries that the client (and/or its employees, officers, invitees and guests) may suffer or sustain as a result of any event beyond the control of the parties, including but not limited to any act of God, fire, explosion, flood, war, acts of terrorism, travel restrictions, theft, malicious damage, strikes, lock-outs, or industrial action of any kind, government regulation or requirement and a restraint by a government or governmental agency (**Force Majeure Event**).
- 10.3 TA is partly or prevented from or hindered in performing its obligations by a Force Majeure Event, performance of those obligations is suspended to the extent that such non performance will not be deemed to be a breach of these terms and conditions.

11. refunds, lost tickets and transfers

- 11.1 Premium Seat Packages and Hospitality Packages for a specific session are not transferable to other sessions.
- 11.2 TA's ticket refund policy is contained in the BI Conditions of Sale and Entry.
 - a) Payment of a fee of \$25 for each lost or stolen ticket;
 - b) Receipt of a written request specifying the number of lost tickets and session details, as well as a row and seat numbers (where applicable).
- 11.3 Lost or stolen tickets can be reissued on:

12. force majeure

- 12.1 Neither party will be liable for any delay in performing or failure to perform its obligations under these terms and conditions if the delay or failure results from any event beyond the control of the parties, including but not limited to any act of God, fire, explosion, flood, war, acts of terrorism, travel restrictions, theft, malicious damage, strikes, lock-outs, or industrial action of any kind, government regulation or requirement and a restraint by a government or governmental agency (**Force Majeure Event**).
- 12.2 If a party is prevented from or hindered in performing its obligations by a Force Majeure Event, performance of those obligations is suspended to the extent that such non performance will not be deemed to be a breach of these terms and conditions.





awards

- ▶ Q Sport – Queensland Sport Event of the Year: 2009, 2012
- ▶ ATP International Group Award of Excellence – Best fan experience: 2012, 2013

contact us

Michael Murphy

Corporate Sales Manager

Phone: 07 3120 7933

Mobile: 0415 599 621

Email: michael.murphy@tennis.com.au