



2013

BRISBANE INTERNATIONAL
CORPORATE HOSPITALITY

CELEBRATING *10 years* OF #BRISBANETENNIS



31 DECEMBER - 7 JANUARY



WELCOME TO THE 2018 BRISBANE INTERNATIONAL

There's never been a better time to secure your premium courtside experience as Brisbane International presented by Suncorp kicks off the 2018 New Year with its highly anticipated 10th anniversary event.

Launching Australia's Summer of Tennis, Brisbane International is the pinnacle of international sport in Queensland, with a Grand Slam honour roll that includes superstars like Roger Federer, Serena Williams, Andy Murray, Lleyton Hewitt and Victoria Azarenka.

In 2017 Spanish legend Rafael Nadal made his Brisbane debut, describing it as an event that made him feel more welcome than home.

With Pat Rafter Arena offering an intimate and unrivalled ambience, the tenth Brisbane International promises one of the most unique and exciting experiences in corporate entertainment.

From December 31 to January 7, why not soak up the atmosphere and be part of history at Pat Rafter Arena, with your choice of

catered courtside seating, or world-class hospitality suites. You may even meet one of your sporting idols as part of the experience.

Our impressive range of entertainment options are in high demand for the anniversary event, so speak to us early to ensure your place in sporting history.

We look forward to celebrating the New Year with you as part of our 10th tournament in 2018.



4

2018 BRISBANE INTERNATIONAL
CORPORATE HOSPITALITY2018 BRISBANE INTERNATIONAL
CORPORATE HOSPITALITY

5



THE CHAMPIONS SUITE

At Rafter Arena's premium corporate facility, the Champions Suite, offers you the perfect setting to entertain your guests in comfort and style. At approx 40sqm, this unique facility comfortably accommodates up to 24 guests in an exclusive environment

Fittingly themed to showcase both Queensland's rich history of tennis legends, as well as the equally impressive Brisbane International honour roll, the Champions Suite's prime location

overlooks Pat Rafter Arena and offers both indoor air conditioned comfort and spectacular outdoor viewing.

Competitively priced on a per head basis for groups of 16, 20 or 24, the Champions Suite provides the classic environment for entertaining your guests.



CELEBRATING 10 years OF #BRISBANETENNIS

BENEFITS INCLUDE

- ▶ Private indoor air conditioned suite, stylishly configured for 16, 20 or 24 guests
- ▶ Premium outdoor balcony cushioned seating for all guests
- ▶ Complimentary Brisbane International 2018 programmes and daily schedules provided in suite
- ▶ Access to exclusive player visits (subject to availability)
- ▶ Access to the exclusive Brisbane International corporate bar and dining room
- ▶ Identification signage on the Champions Suite door
- ▶ A selection of fine food and beverages served to the Champions Suite (additional cost)

THE CHAMPIONS SUITE

Package	Price
Per Session	From \$3060

BOOKING

To secure this exclusive facility, or for more information on pricing, please phone 07 3120 7933 or email: michael.murphy@tennis.com.au





CORPORATE SUITES

Our luxury twelve seat corporate suites deliver the ultimate Brisbane International experience. Treat your guests to the best in entertainment and enjoy the perfect environment for relaxed networking.

The corporate suites are located directly behind the baseline and their elevated position provides the perfect view.

BENEFITS INCLUDE

- ▶ Private twelve seat indoor, airconditioned suite, including boardroom style dining table and kitchenette.
- ▶ Premium outdoor balcony cushioned seating for all guests
- ▶ Access to exclusive player visits (subject to availability)
- ▶ Complimentary Brisbane International 2018 programmes and daily schedules provided in suite
- ▶ Access to the exclusive Brisbane International corporate bar and dining room
- ▶ Identification signage on the Corporate Suite door
- ▶ A selection of fine food and beverages served to your corporate suite (additional cost)



CORPORATE SUITES

Choose an alternative that best suits your needs

	Price
PACKAGE A, 7 SESSIONS	Sun 1 Jan - Day, Mon 2 Jan - Night, Tue 3 Jan - Day, Wed 4 Jan - Night, Thu 5 Jan - Day, Sat 7 Jan - Day, Sat 7 Jan - Night \$22,710
PACKAGE B, 7 SESSIONS	Mon 2 Jan - Day, Tue 3 Jan - Night, Wed 4 Jan - Day, Thur 5 Jan - Night, Fri 6 Jan - Day, Fri 6 Jan -Night, Sun 8 Jan - Twilight \$22,710
ALL 14 SESSIONS	\$35,790





CORPORATE BOXES

Enjoy all the centre court action from the popular eight seat open air corporate boxes.

Located courtside in Pat Rafter Arena, these enclosures offer fantastic viewing and provide you and your guests with a unique opportunity to get up close and personal with the best tennis players in the world.

BENEFITS INCLUDE

- ▶ Private eight seat open air courtside enclosure, with ice box and steward service.

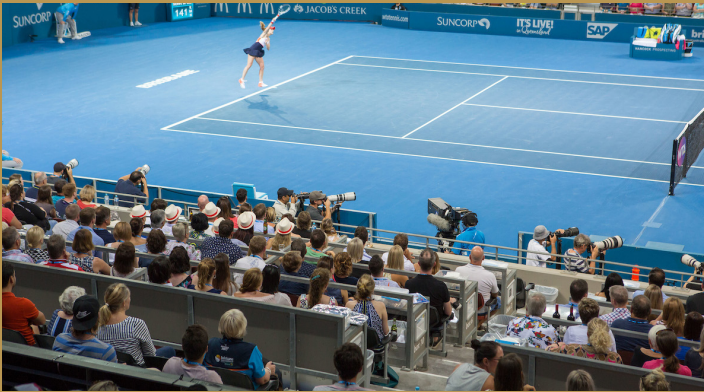
- ▶ Complimentary Brisbane International 2018 programmes and daily schedules (provided for collection at the corporate bar - one per person)
- ▶ Identification signage on your corporate box
- ▶ Access to the exclusive Brisbane International corporate bar and dining room
- ▶ A selection of food and beverages served to your corporate box (additional cost)

- ▶ Alternative option to pre-book and dine in the relaxed confines of the corporate dining room. Three course buffet meal and beverages available (additional cost). Dining room open from Thurs 4 - Sun 7 Jan only.

CORPORATE BOXES

Choose an alternative that best suits your needs

	Price
PACKAGE A, 7 SESSIONS	Sun 1 Jan - Day, Mon 2 Jan - Night, Tue 3 Jan - Day, Wed 4 Jan - Night, Thu 5 Jan - Day, Sat 7 Jan - Day, Sat 7 Jan - Night \$10,800
PACKAGE B, 7 SESSIONS	Mon 2 Jan - Day, Tue 3 Jan - Night, Wed 4 Jan - Day, Thur 5 Jan - Night, Fri 6 Jan - Day, Fri 6 Jan -Night, Sun 8 Jan - Twilight \$10,800
ALL 14 SESSIONS	\$17,820





THE BASELINE CLUB

The Baseline Club offers the true tennis enthusiast the perfect package. Your premium cushioned reserved seat located right behind the baseline will ensure you enjoy your tennis action up close, in comfort and style. Feel the on-court pressure and intense rivalries as the action heats up between the world's best players.

Your premium reserved seat in Pat Rafter Arena for all fourteen sessions is transferable - allowing you to

share with family and friends, send along a guest or just enjoy yourself.

Baseline Club members and guests are also welcome in the exclusive corporate bar and dining room. Pre session bookings are required in the corporate dining room which is open from Thursday 4 - Sunday 7 only.



BENEFITS INCLUDE

- ▶ Premium reserved cushioned seat in Pat Rafter Arena for all fourteen sessions of the tournament
- ▶ Complimentary Brisbane International 2018 programmes and daily schedules (provided for collection at the corporate bar - one per person)
- ▶ Access to the exclusive Brisbane International corporate bar and dining room
- ▶ Option to pre-book and dine in the relaxed confines of the corporate dining room. Three course buffet meal and beverages available (additional cost).

Dining room open from Thurs 4 - Sun 7 January only.

THE BASELINE CLUB

PER SEAT	Price
ALL 14 SESSIONS	\$1,800



SESSION SELECT

Brisbane International Session Select is the popular all inclusive and 'fuss free' option. This flexible package includes a prime reserved seat in Pat Rafter Arena, as well as a three course buffet meal and beverages, served pre-session in the corporate dining room.

Access to the exclusive corporate bar, complimentary programme and daily schedule are also included.

Available on a per session basis from Thursday to Saturday, or as a package only to the women's and men's finals, Session Select is the all in one ticket enabling you to sit back, relax and enjoy your Brisbane International experience.

BENEFITS INCLUDE

- Premium reserved seat in Pat Rafter Arena
- All inclusive three course buffet meal and beverages, served pre-session in the

relaxed confines of the corporate dining room.

- Access to the exclusive Brisbane International corporate bar and dining room
- Complimentary Brisbane International 2018 programmes and daily schedules (provided for collection at the corporate bar - one per person)

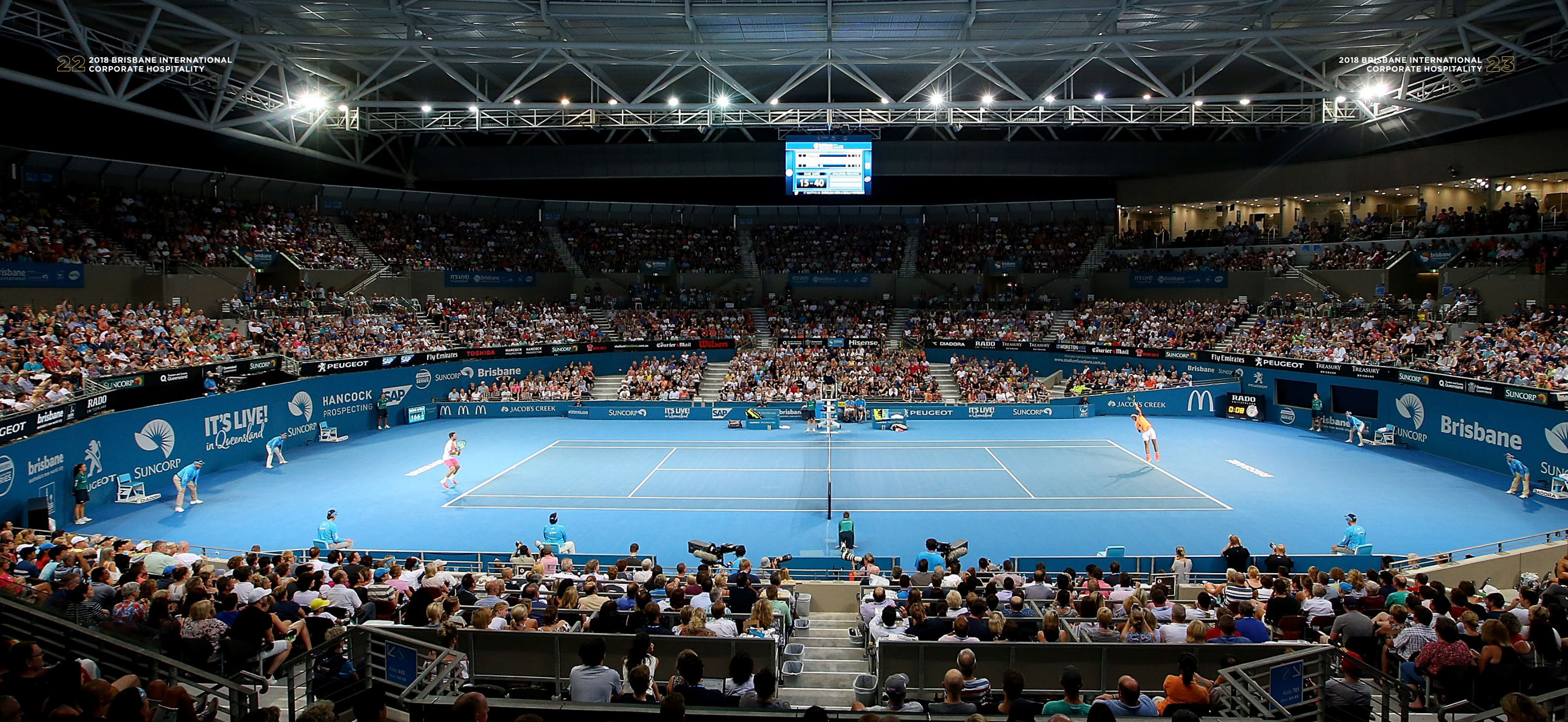


SESSION SELECT

Select the sessions that best suits your needs

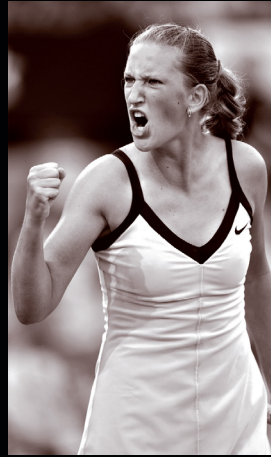
SESSION	Thu 4 Jan - Day	Thu 4 Jan - Night	Fri 5 Jan - Day	Fri 5 Jan - Night	Sat 6 Jan - Day	Sat 6 Jan - Night & Sun 7 Jan - Twilight
PRICE	\$320	\$320	\$320	\$360	\$360	\$770





THE HONOUR ROLL

2009



Victoria Azarenka (BLR)

2010



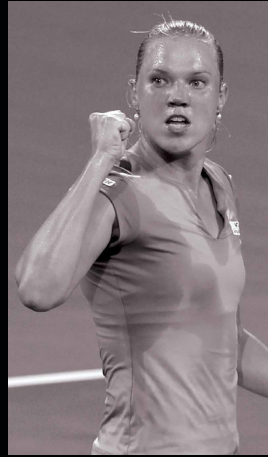
Kim Clijsters (BEL)

2011



Petra Kvitova (CZE)

2012



Kaia Kanepi (EST)

2013



Serena Williams (USA)

2014



Serena Williams (USA)

2015



Maria Sharapova (RUS)

2016



Victoria Azarenka (BLR)

2017



Karolina Pliskova (CZE)



Radek Stepanek (CZE)



Andy Roddick (USA)



Robin Soderling (SWE)



Andy Murray (GBR)



Andy Murray (GBR)



Lleyton Hewitt (AUS)



Roger Federer (SUI)

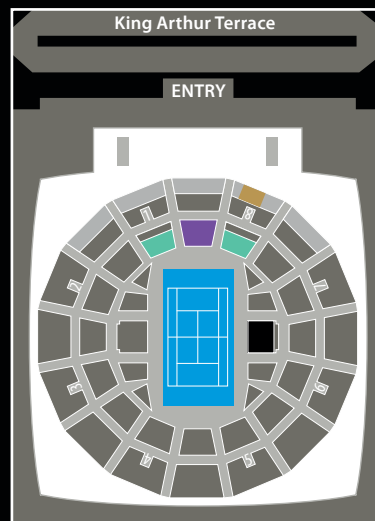


Milos Raonic (CAN)



Grigor Dimitrov (BGR)

THE SEATING GUIDE



SEATING KEY

- CHAMPIONS SUITE
- CORPORATE SUITES
- CORPORATE BOXES
- BASLINE CLUB
- SESSION SELECT

HOW TO BOOK

To book your premium corporate entertainment package download your order form at brisbaneinternational.com.au

For more information please contact Michael Murphy at Brisbane International.

Michael Murphy
Corporate Sales Manager
Phone: 07 3120 7933
Mobile: 0415 599 621
Email: michael.murphy@tennis.com.au

CELEBRATING *10 years* OF #BRISBANETENNIS



BRISBANE INTERNATIONAL 2018
RESERVATION FORM AND TAX INVOICE*



PACKAGE			PRICE PER SEAT/PACKAGE (INC. GST)	NO. OF SEATS/PACKAGES	SUBTOTAL \$
THE CHAMPIONS SUITE			POA		
CORPORATE SUITE			\$35,790		
CORPORATE SUITE PACKAGE A			\$22,710		
CORPORATE SUITE PACKAGE B			\$22,710		
CORPORATE BOX			\$17,820		
CORPORATE BOX PACKAGE A			\$10,800		
CORPORATE BOX PACKAGE B			\$10,800		
BASELINE CLUB			\$1,800		
SESSION SELECT					
DATE	ROUND	SESSION			
Thu 4 Jan	2 & QF	Day	\$320		
	2 & QF	Night	\$320		
Fri 5 Jan	MQF & WSF	Day	\$320		
	MQF & WSF	Night	\$360		
Sat 6 Jan	MSF	Day	\$360		
	WF & WDF	Night			
Sun 7 Jan	MF & MDF	Twilight	\$770		
Please note: the match schedule is subject to change.				TOTAL (INCL. GST)	\$

PAYMENT TERMS: A minimum 50% deposit is required to secure your booking. Please select one of the following options;

☐ I wish to pay a 50% deposit (only available for bookings made prior to Friday 29 September 2017) with the balance due by Friday 27 October 2017.

☐ I wish to pay in full.

CONTACT DETAILS

Client / Company Name: _____

Contact name: _____

Phone: _____ Mobile: _____

Email: _____

Second contact name (optional): _____

Postal address: _____

Ticket delivery address* (only within Australia): _____

Privacy statement: Tennis Australia requires the information requested on this reservation form to: provide you with official Brisbane International corporate package tickets and benefits; and for related purposes which can be reasonably expected including providing Tennis Australia and Brisbane International promotional material. Personal information will be dealt with in accordance with the Tennis Australia privacy policy (www.tennis.com.au/privacy).

METHOD OF PAYMENT

☐ Cheque
Please make payable to Tennis Australia Limited and send with a copy of the order form to Brisbane International Corporate Hospitality, 190 King Arthur Terrace, Tennyson QLD 4105.

☐ EFT
ANZ, 388 Collins St, Melbourne Vic 3000. BSB: 013 006. Acc number: 836472796. Acc name: Tennis Australia Limited. Please include your company name as well as a package reference when transferring payment and send remittance advice via email to brisbaneinternational@tennis.com.au.

☐ Amex ☐ Visa ☐ MasterCard

Cardholder name:	CVV Number:
Card number:	Expiry date:

Tennis Australia, ABN 61006281125, Melbourne Park Olympic Boulevard Melbourne VIC 3000 GSTR2000/-

***This document will be a tax invoice for GST purposes when fully completed and Payment made. Therefore please retain a copy for your records.**

AGREEMENT OF CONDITIONS

I, (print name): _____ have read and agreed to the 2018 Brisbane International Corporate Hospitality Conditions.

Signature: _____ Date: _____

Reservations will only be accepted on completion of this signed form with payment.

BRISBANE INTERNATIONAL 2018

CORPORATE HOSPITALITY CONDITIONS



Corporate Hospitality for the Brisbane International 2018 (Event) is issued by Tennis Australia (TA) subject to the following conditions:

DEFINITIONS AND INTERPRETATION

- The following definitions apply in the Corporate Hospitality Conditions unless the context requires otherwise:
Client means a purchaser of Corporate Hospitality from TA such as the party listed as such on a signed Corporate Hospitality reservation or renewal form.
Corporate Hospitality means TA's premium seating and corporate hospitality products, including but not limited to:
(a) 'Corporate Suite' packages;
(b) 'Corporate Box' packages;
(c) 'Baseline Club'; and
(d) 'Session Select'.
Guest means any person entering the Event under the Corporate Hospitality purchased on behalf of Client.
- Any reference in these Conditions to the singular includes the plural, to any gender includes all genders, to persons includes all bodies and associations both incorporated and unincorporated, to any legislation or regulations includes all amending and succeeding legislation and regulation, to conduct includes an omission, statement or undertaking whether or not in writing, to AUD, dollars or \$ is to Australian currency and headings are for reference purposes only.

APPLICABLE RULES

- In addition to these Conditions, Client and any Guest's entry to and presence at the Event is subject to:
(a) the Brisbane International Conditions of Sale and Entry published at www.brisbaneinternational.com.au exhibited at the Event or provided by TA on request; and
(b) reasonable directions issued from time to time by TA, the Queensland Tennis Centre and their representatives.
- If Client or any Guest is in breach of the rules set out in Condition 3, the Client or Guest may be refused entry to the Event, directed to leave the Event or required by TA to forfeit the allocated Corporate Hospitality.

AVAILABILITY

- Corporate Hospitality is always subject to availability. The submission of a Corporate Hospitality reservation or renewal form does not guarantee specific seating locations or hospitality service allocations. TA maintains discretion to determine final locations and allocations.

NO ON-SELLING

- Corporate Hospitality tickets provide Client with a conditional licence for admission to the Event and to specific sessions and locations within the Event (designated on the face of that ticket).
- The Corporate Hospitality and the licence granted to Client for admission to the Event may be terminated by TA (without refund) in circumstances where Client (without prior written consent from TA):
(a) resells all or part of its Corporate Hospitality at for an amount that is higher than face value;
(b) resells all or part of its Corporate Hospitality through a broker or agent;
(c) advertises or offers its Corporate Hospitality for resale by any medium; or
(d) packages the Corporate Hospitality for any promotional or commercial purposes (including competitions or trade promotions) or to enhance demand for other goods or services marketed by Client

NO REFUND

- Other than in accordance with the Australian Consumer Law, Corporate Hospitality purchases are not-refundable. The match schedule for the Event is always subject to change and is continuously adjusted during the Event, so Client is not entitled to any refund if a scheduled match does not occur on a scheduled day or at a scheduled time.
- Corporate Hospitality is allocated according to specific sessions of the Event, so will not be exchanged by TA for tickets to other sessions of the Event.

LOST TICKETS

- Clients and Guests must keep tickets in safe and in good condition. TA is not obliged to replace any ticket under any circumstances, including loss or theft - however TA may, in its sole and absolute discretion, replace a ticket which has been lost or stolen (and will charge a \$25 fee per replaced ticket). A request to replace lost tickets should be in writing, specify the number of lost tickets, session details, row and seat numbers.

LIMITED TRANSFER OF CORPORATE HOSPITALITY

- The Session Select product may not be transferred.
- Client may only transfer other Corporate Hospitality products with the written consent of TA (which may be withheld in TA's absolute discretion) and provided that:
(a) there is no breach of Condition 7 above (i.e no premium, advertising or promotional packages)
(b) the Corporate Hospitality package is transferred in its entirety and not broken up and transferred on a session by session basis; and
(c) the transferee has provided written acceptance of these Conditions.
- Even where Client has transferred its Corporate Hospitality in accordance with Condition 12:
(a) Client remains responsible for the transferee will indemnify, defend and hold harmless TA in relation to the

- use of the transferee's attendance at the Event; and
(b) TA is under no obligation to reprint any signage or tickets in the transferee's name.
- For the avoidance of doubt, Client may allocate its Corporate Hospitality among its Guests.

PAYMENT

- Prices quoted for Corporate Hospitality are inclusive of GST unless otherwise expressly specified. Prices will be adjusted if there is change in law which results in an increase or decrease to the rate of GST.
- Payments must be made in AUD\$. The following payment methods are accepted by TA:
(a) Electronic funds transfer (EFT):
(i) EFT details are:
ANZ - Australia and New Zealand Banking Group LTD
288 Collins Street
Melbourne VIC 3000
BSB: 013-006
Account No: 836472796
Account Name: Tennis Australia LTD trading as Tennis Australia
Reference: Please include your company name as well as a package reference when transferring payment.
(ii) Send EFT remittance advice via e-mail to brisbaneinternational@tennis.com.au.
(iii) Funds must be received by TA within 14 days of receipt of reservation or renewal form, or Client's Corporate Hospitality reservation may be cancelled by TA.
(b) Credit card:
(i) Client's credit card will be processed upon receipt of the completed Corporate Hospitality reservation or renewal form.
(c) Cheque:
(i) Payments after 1 December 2017 must be made by credit card or EFT. Cheques will not be accepted after this date.
(ii) Make payable to Tennis Australia Ltd and send with a copy of the order form to Brisbane International Corporate Hospitality, 190 King Arthur Terrace, Tennyson, Queensland 4105.
(iii) Funds must be received by TA within 14 days of receipt of the reservation or renewal form, or Client's Corporate Hospitality reservation may be cancelled by TA.
- The Corporate Hospitality reservation or renewal form becomes a tax invoice for GST purposes when payment is confirmed by TA. TA may generate a separate tax invoice if a reservation or renewal form has not been completed by Client.
- TA will not issue tickets for Corporate Hospitality until full payment has been received.

DELIVERY

- In relation to Corporate Hospitality purchased prior to 16 December 2017, Client can elect to:
(a) have the tickets delivered by registered post (at TA's cost) to an Australian address nominated by Client; or
(b) have Client or Guests collect the tickets from the Ticket Collection Booth in the Queensland Tennis Centre forecourt on the relevant day of the Event (with photo ID).
- Corporate Hospitality purchased after 15 December 2017 will not be posted, and must be collected from the Ticket Collection Booth in the Queensland Tennis Centre forecourt on the relevant day of the Event (with photo ID).

CONDUCT

- Client is responsible for the conduct of all Guests at the Event, including ensuring that Guests:
(a) comply with BI Conditions of Sale and Entry for the Event;
(b) wear Event passes and keep them visible (facing out);
(c) observe the dress code for hospitality facilities at the Event (e.g collared shirt and tailored pants/shorts for men, no denim, rubber thongs, singlets); and
(d) observe tennis etiquette: (only leave seats at change of ends, quiet during points, silent mobile phones).
- TA and Queensland Tennis Centre staff may, at their discretion, remove or relocate anyone displaying unacceptable behavior during the Event.

PROHIBITION ON ADVERTISING AND PROMOTION

- Client must not:
(a) use any intellectual property owned by TA;
(b) conduct any advertising or promotion whatsoever in relation to the Corporate Hospitality or the Event, including, without limitation:
(i) display of any corporate signage or corporate identification within or outside the Event; and
(ii) distribution of any promotional items to Guests or other patrons at the Event; or
(c) use the name of TA or of any event promoted by TA in any way that connects it with Client such that it implies or gives the impression that Client or Client's activities are endorsed by TA or that Client is a sponsor or in some other way connected to TA or such event without prior written consent of TA.

- Condition 23(b) is subject to the following:
(a) TA will display Client's name (only) on Corporate Hospitality tickets in the standard font used for the Event.
(b) If Client has purchased a private facility like a Corporate Suite or Corporate Box product, TA will display signage bearing Client's name on the exterior of Client's facility.

CHILDREN

- Children aged under 18 years must be accompanied by an adult in areas reserved for Corporate Hospitality. TA reserves the right to exclude children under the age of 18 years from licensed areas.
- Any child aged three years and older must carry his/her own ticket to the Event.

FOOD AND BEVERAGE

- Client acknowledges and accepts that TA:
(a) has the sole rights in respect of the provision of all catering, food and beverage services at the Event; and
(b) may from time to time appoint an agent to provide catering, food and beverage services on its behalf.
- If Client requires catering, food or beverage services for a private facility such as a Corporate Suite or Corporate Box, Client must liaise directly with TA's catering agent. Unless otherwise directed by TA, Client will pay the catering agent directly all costs for such catering, food or beverage services. Client acknowledges that such costs are in addition to the price of the Corporate Hospitality.
- Client agrees that it will not permit its Guests to:
(a) bring outside food or beverage into a private facility such as a Corporate Suite or Corporate Box; or
(b) consume food or beverage that was served inside a private facility outside the facility.

PROHIBITION ON FIT-OUT

- Corporate Hospitality facilities may be equipped with fixtures and furnishings from time to time. No additions, changes, alterations or other improvements shall be made to any facility (including a corporate suite or box), fixtures or furnishings without the prior written consent of TA.

LIABILITY

- Client agrees to release and indemnify, defend and hold harmless TA, its officers, directors, employees, representatives and agents from and against any and all losses, liabilities, expenses, claims, demands, suits and damages whatsoever and howsoever arising (including legal fees) resulting from or in connection with the acts of omissions of Client and Client's Guests or Client's breach of any of these Conditions.
- To the maximum extent permitted by law, Client agrees that TA and its officers, directors, employees, representatives and agents are released and discharged of and from any and all claims, demands, suits, damages, losses, liabilities and injuries that Client (and/or its employees, officers, invitees and guests) may suffer or sustain at or in connection with the Event, by negligence or otherwise. To the extent that TA cannot exclude liability then, to the maximum extent permitted by law, TA's liability is limited (at its election) to TA repaying amounts paid by Client or supplying or resupplying any tickets which have been reserved for Client in accordance with these Conditions.

PRIVACY

- By purchasing a Corporate Hospitality product, Client consents to the collection and use of its (and its Guests') personal information by Ticketek and TA and the disclosure of that information by Ticketek to TA for the purposes of ticketing and event management and marketing, including the promotion of the Event and related events, offers from TA and other Australian Tennis Organisations regarding other events, products and services, and offers from third parties who have a relationship with TA or other Australian Tennis Organisations about their events, products and services. TA will otherwise collect, store, use and disclose personal information in accordance with its privacy policy displayed at <http://www.tennis.com.au/privacy>, which also contains information about accessing and correcting personal information and complaints about privacy breaches.
- You may contact TA at any time to request access to the information held about you or to 'opt out' of direct marketing.

GENERAL

- These Conditions may be varied from time to time by TA for operational, security or safety reasons. TA will maintain an up-to-date copy at www.brisbaneinternational.com.
- Disputes relating to these Conditions must be resolved in accordance with the laws of State of Victoria, Australia and the parties submit to the jurisdiction of the courts of that State.

For any queries in relation to these Conditions please contact TA's Brisbane International Corporate Hospitality department by email at brisbaneinternational@tennis.com.au.